

Husk
— ZULULAMI —

Coastal Bliss. Forest Luxury.

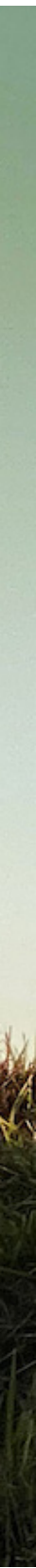
ZULULAMI
LUXURY COASTAL ESTATE

22 APARTMENTS WITHIN ZULULAMI LUXURY COASTAL ESTATE

Take me to...

A place where my senses are revitalised. Where I can live my ultimate reality. Take me to a place where my enquiring mind is free to explore. Where the salt air hits my skin, and the fresh air centres me. A place where I walk to the beat of nature's soundtrack. A place where intentional design meets with the intricacies of the natural surroundings, and I am inspired by the smells, the sounds and the sights that surround me.

**Take me home to Zululami.
Take me home to Husk.**





Starwood
ZULULAMI CONSERVANCY

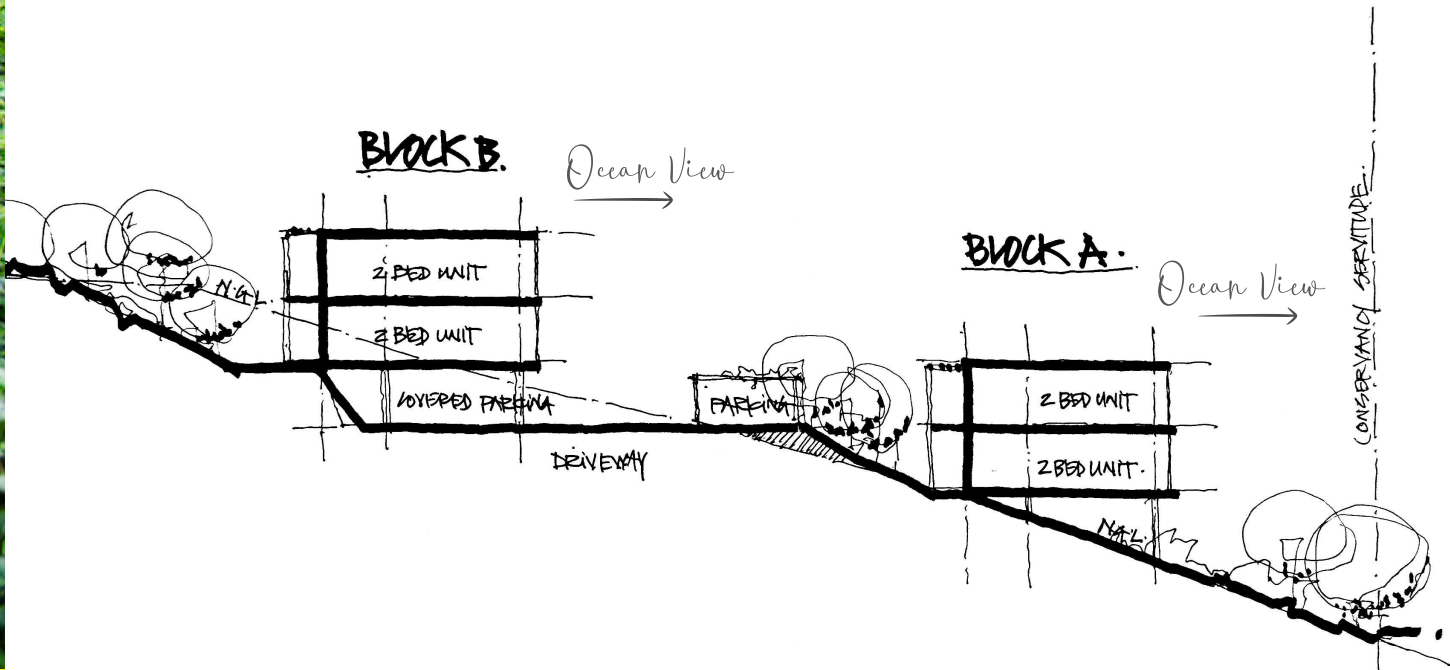


Take me to...

A SEA OF GREEN

Perched atop a hill and embeded within a natural conservancy, Husk enjoys both expansive forest views and the ocean horizon from its lofty position, celebrating a wealth of nature in every single direction

Valleys to the left. Calm seas to the right.
Treetops up above. Nature all around.



Take me to...

A HOME I'VE ONLY DREAMT OF

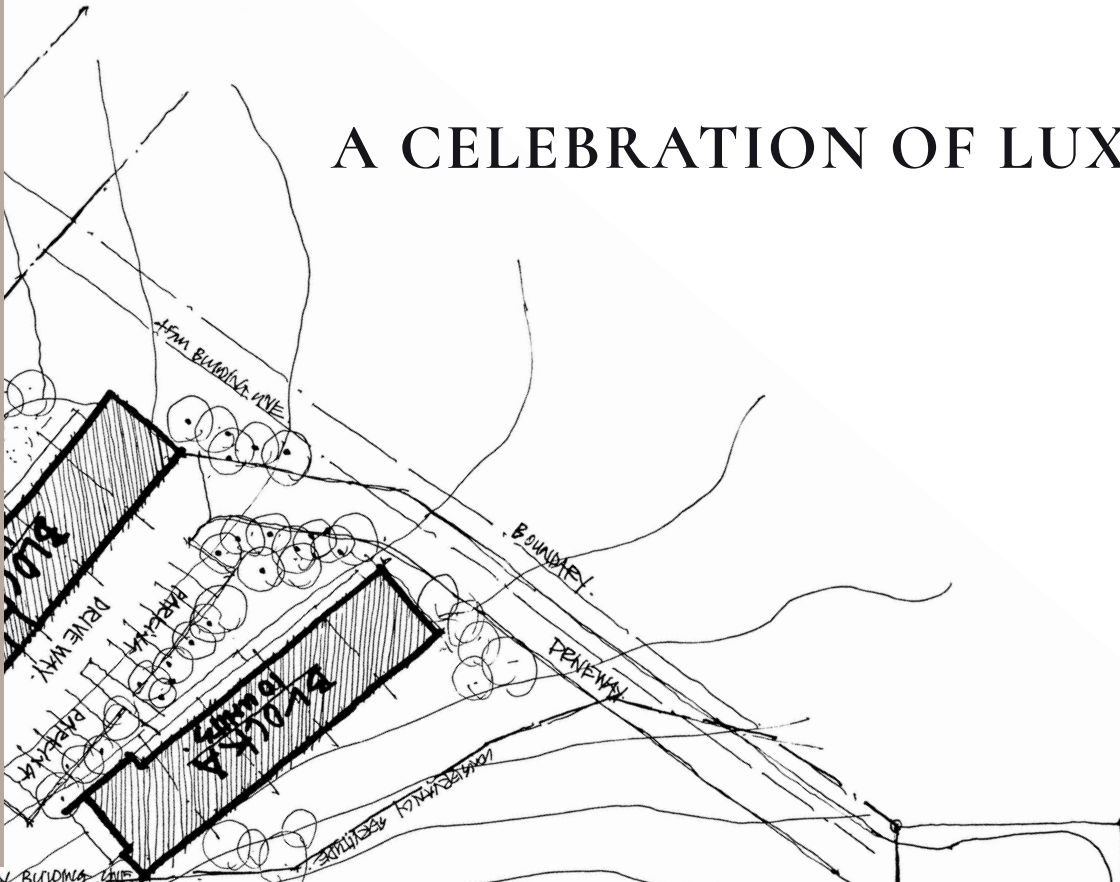
Nestled within the exclusive Zululami Luxury Coastal Estate, two blocks of 22 stylised apartments float intentionally within their natural surroundings. In conserving more than half of our natural inheritance, Husk pays tribute to Starwood Conservancy as a rare and beautiful treasure.

Starting from R2,345 million, two and three bed modern apartment options provide an affordable lifestyle opportunity to those with an intrinsic appreciation for all things design.

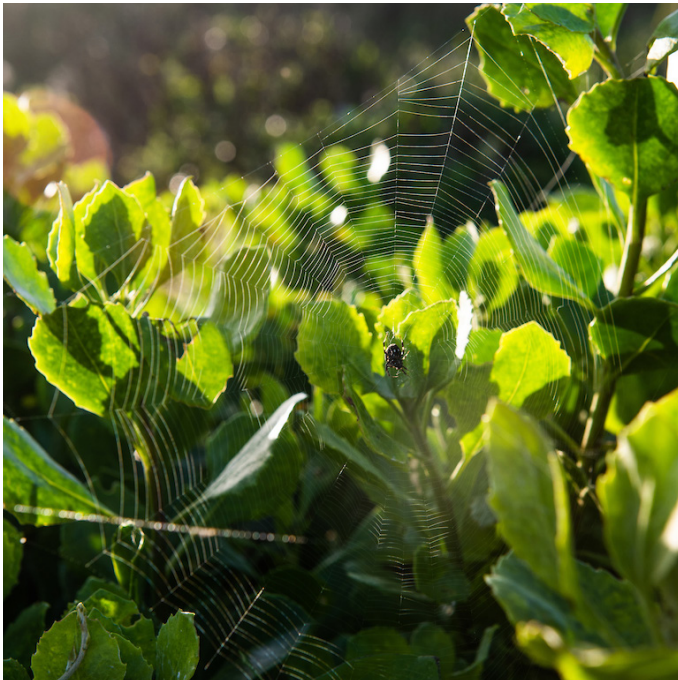


Take me to...

A CELEBRATION OF LUXURY





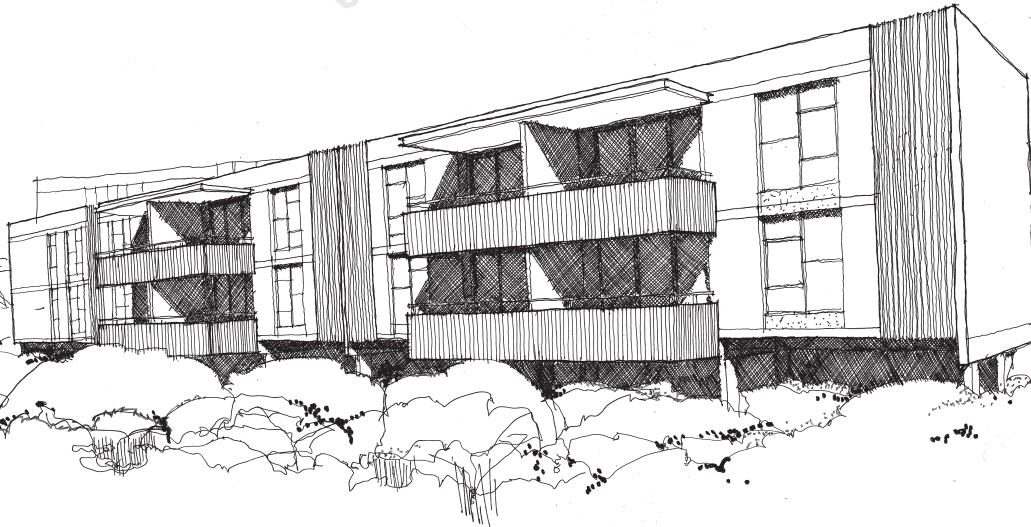


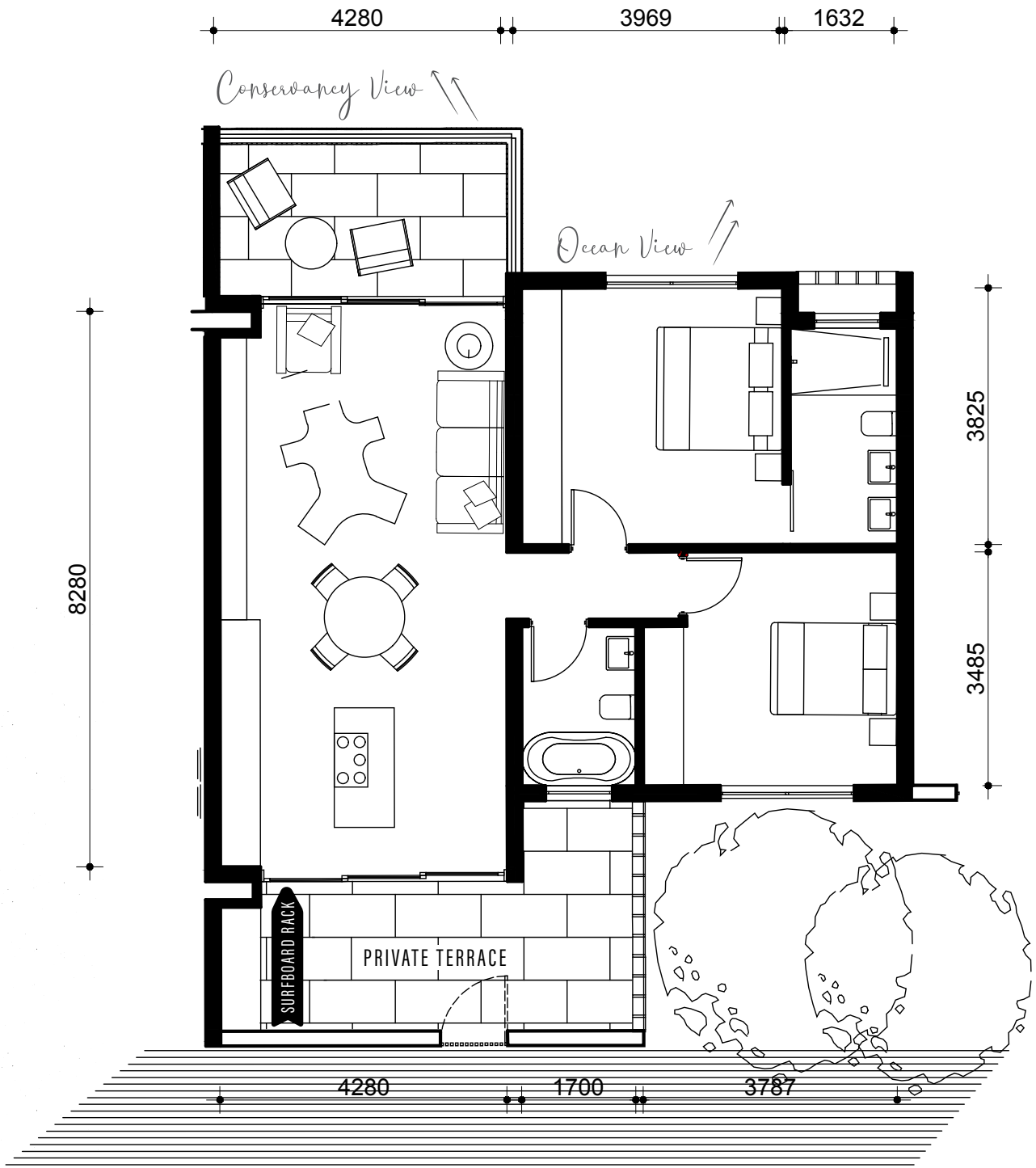
Two bed two bath apartment

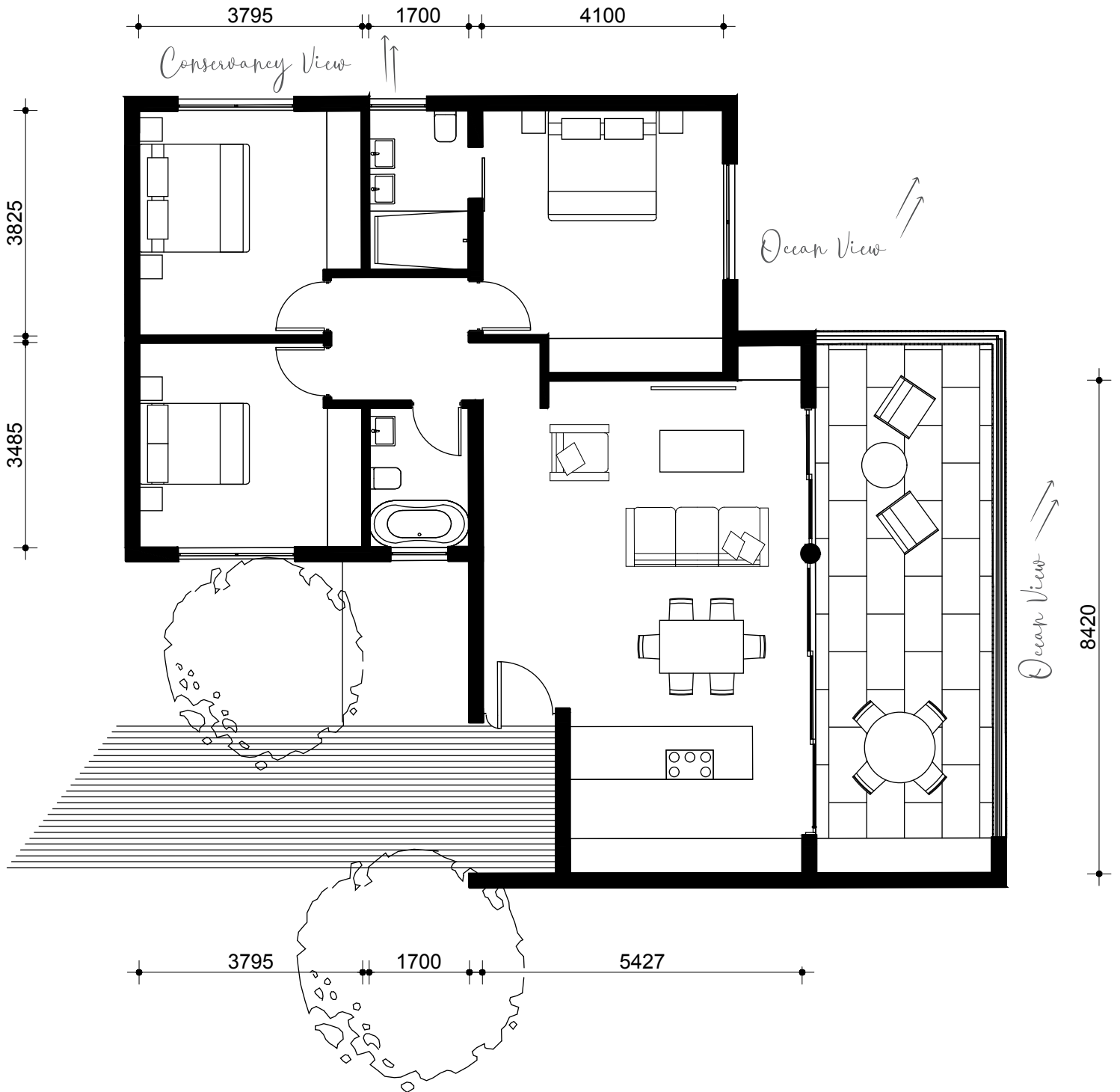
108m² - of which 84m² inside and 24m²
outside covered balcony

Private terrace | Two parkings

An option of a 5m² lockable storage facility







Three bed two bath apartment

142m² - of which 116m² inside and 26m²
outside covered balcony

Private terrace | Two parkings

An option of a 5m² lockable storage facility





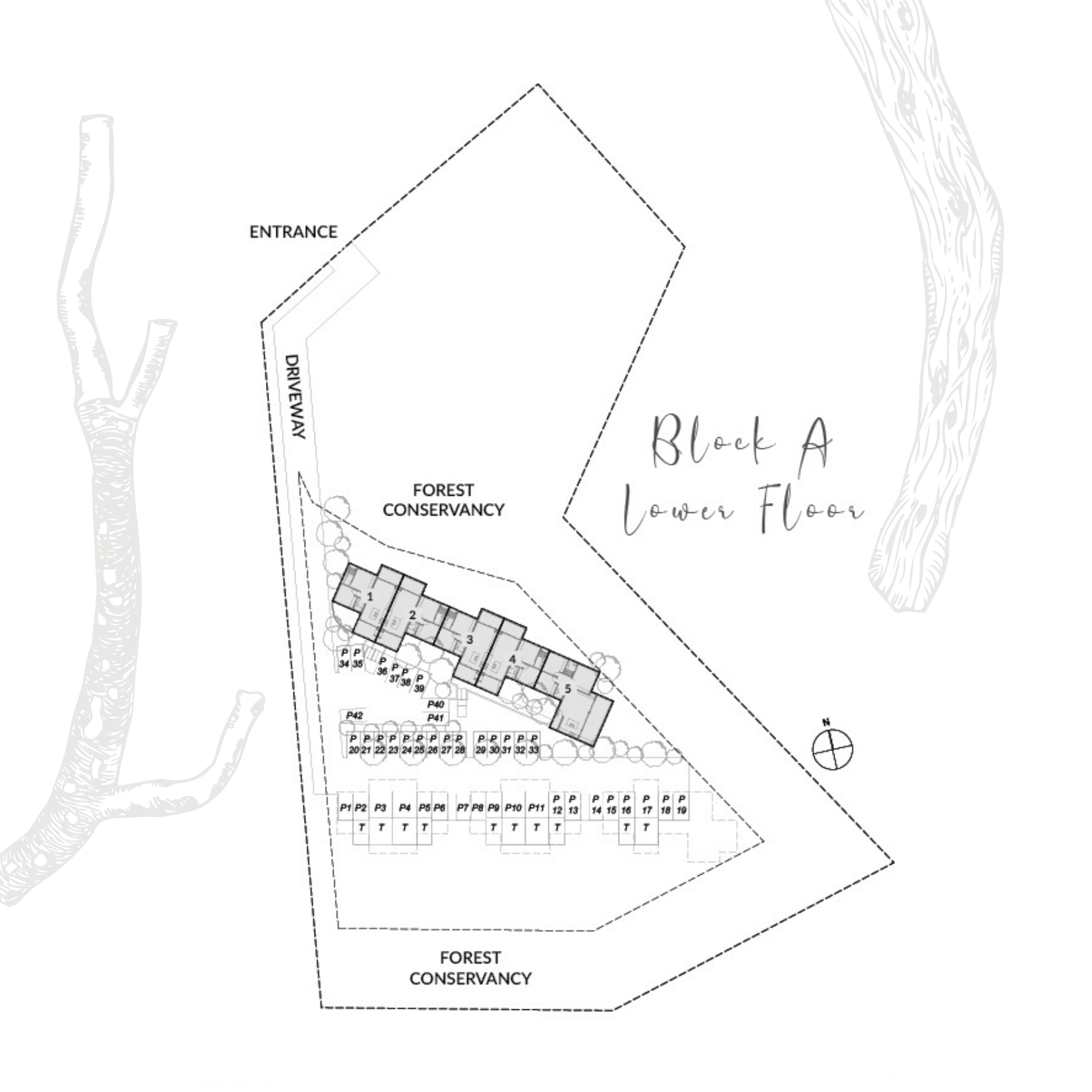
Life here offers a sanctuary in which to live holistically, naturally and purposefully. Coastal bliss combined with forest luxury provides a piece of natural heaven on the KZN North Coast.

Find your home at Husk and enjoy a range of facilities on offer:

- Wetland clubhouse
- Beach pavilion with two beach access points
- Sports pavilion with fitness park
- Citrus park
- Community harvest garden
- Wetlands with raised paths and decks

ZULULAMI
LUXURY COASTAL ESTATE



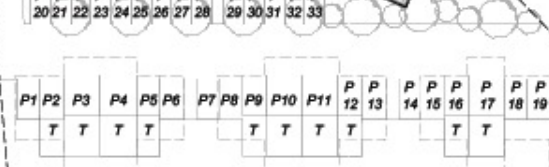


ENTRANCE

DRIVEWAY

FOREST
CONSERVANCY

Block A
Lower Floor



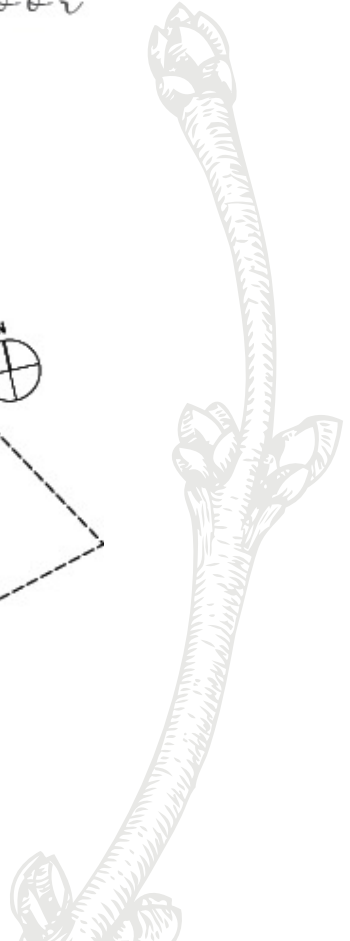
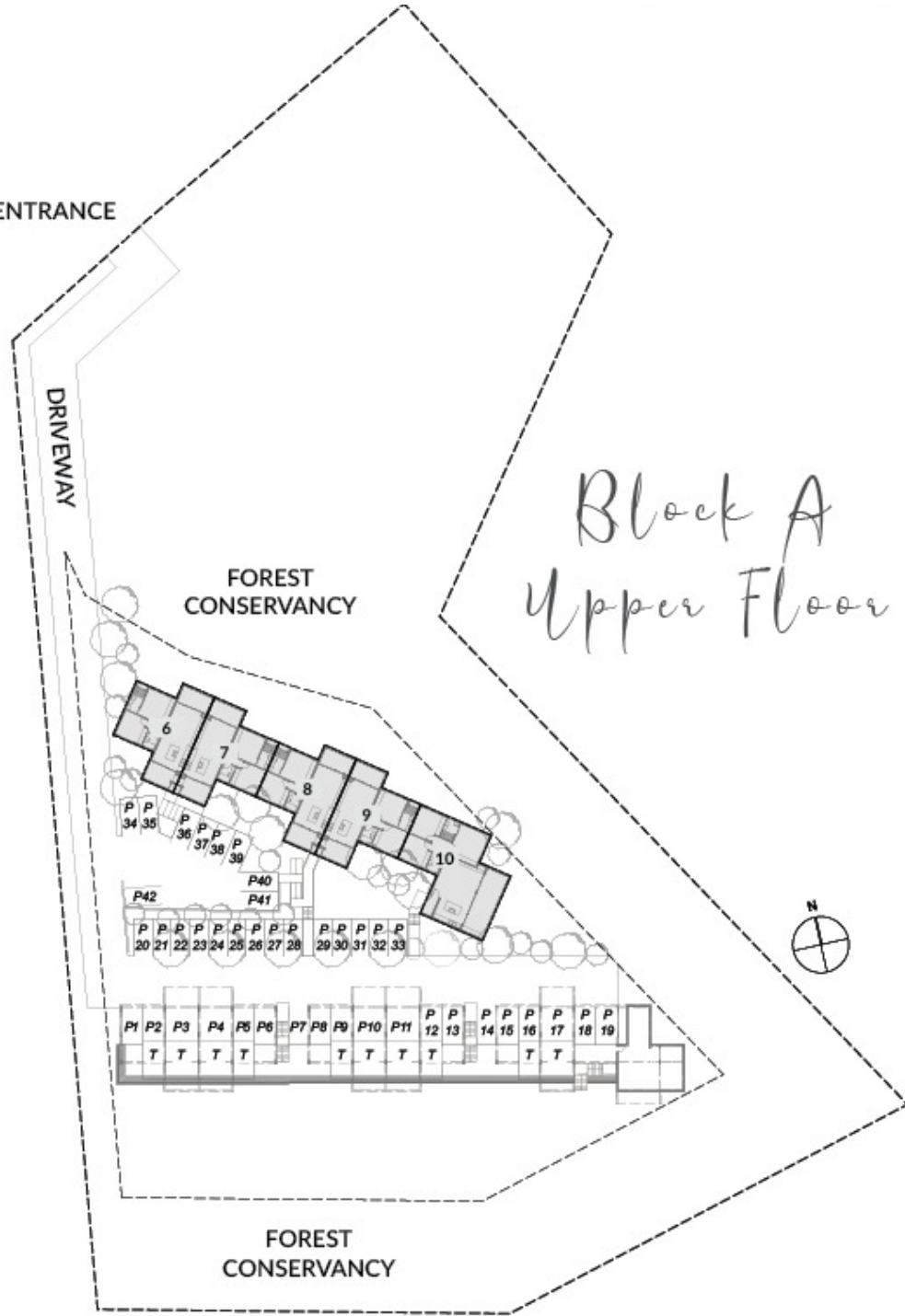
FOREST
CONSERVANCY

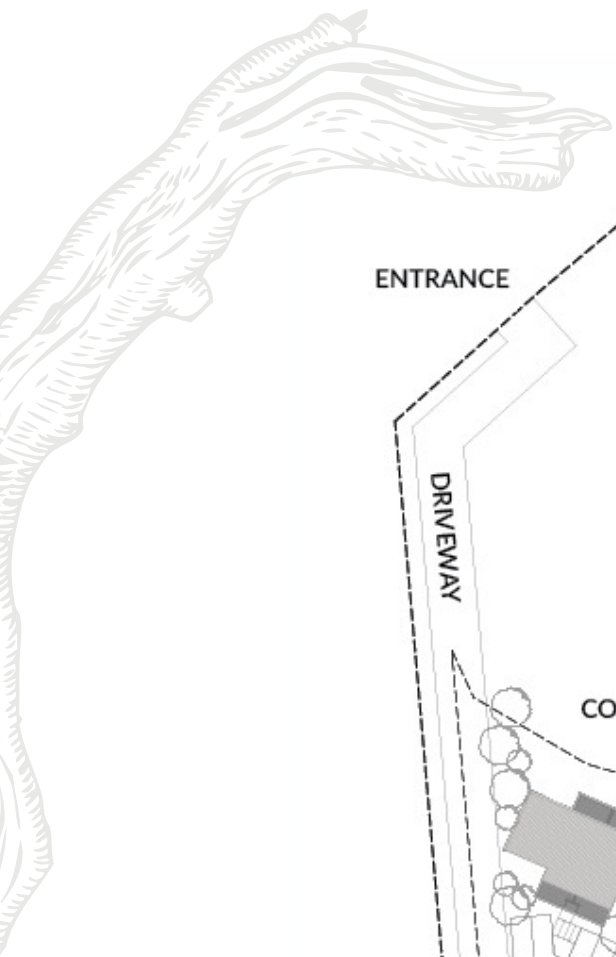
ENTRANCE

DRIVEWAY

FOREST
CONSERVANCY

Block A
Upper Floor



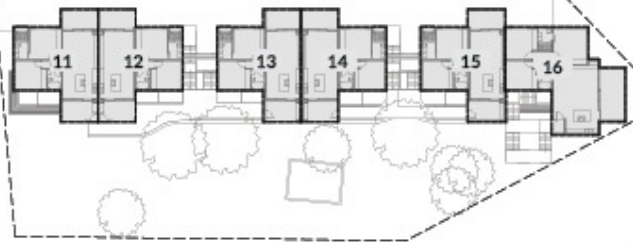


ENTRANCE

DRIVEWAY

Block B
Lower Floor

FOREST
CONSERVANCY



FOREST
CONSERVANCY

ENTRANCE

DRIVEWAY

FOREST
CONSERVANCY

Block B
Upper Floor



FOREST
CONSERVANCY





Take me to...

A CONSIDERED LIFESTYLE

Enjoy all the pleasures of living within the established Zululami Luxury Coastal Estate. Dive into new activities and surround yourself with a like-minded community.

www.zululamiestate.co.za/husk